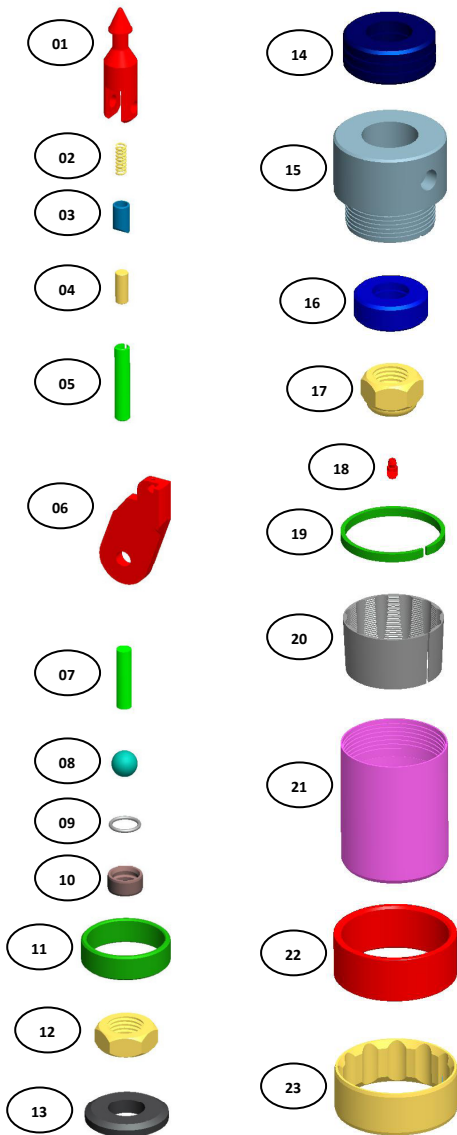


**HWL-LI CORE BARREL SPARE PARTS KIT**



	ITEM DESCRIPTION	PART NUMBERS
<b>1-23</b>	<b>HWL-LI CORE BARREL SPARE PARTS KIT</b>	<b>18-00-240</b>
<b>1</b>	SPEARHEAD POINT	16-03-001
<b>2</b>	COMPRESSION SPRING	16-03-002
<b>3</b>	DETENT PLUNGER	16-03-003
<b>4</b>	SOLID DOWELL 7/16" x 1"	16-03-005
<b>5</b>	SPRING DOWELL 1/2" x 2 3/4" - 2 NOS.	18-03-003
<b>6</b>	HWL-LI LATCH - 2 NOS.	18-03-005
<b>7</b>	SOLID DOWELL 1/2" x 2 1/8"	18-03-006
<b>8</b>	STAINLESS STEEL BALL 22 mm	16-03-014
<b>9</b>	LANDING INDICATOR BUSH O RING	16-03-016
<b>10</b>	LANDING INDICATOR BUSH	16-03-015
<b>11</b>	LANDING SHOULDER	18-03-008
<b>12</b>	ADJUSTING HEX NUT	18-03-010
<b>13</b>	SHUT OFF VALVE - 2 NOS.	18-03-012
<b>14</b>	THRUST BEARINGS - 2 NOS.	18-03-014
<b>15</b>	BEARING SPINDLE	18-03-016
<b>16</b>	THRUST BEARING - 1 NOS.	18-03-017
<b>17</b>	NYLOCK NUT , 1" UNC	18-03-019
<b>18</b>	GREASE FITTING	16-03-024
<b>19</b>	RING STOP	18-03-025
<b>20</b>	CORE LIFTER	18-03-026
<b>21</b>	CORE LIFTER CASE	18-03-027
<b>22</b>	RING LANDING	18-02-003
<b>23</b>	STABILIZER RING	18-02-006