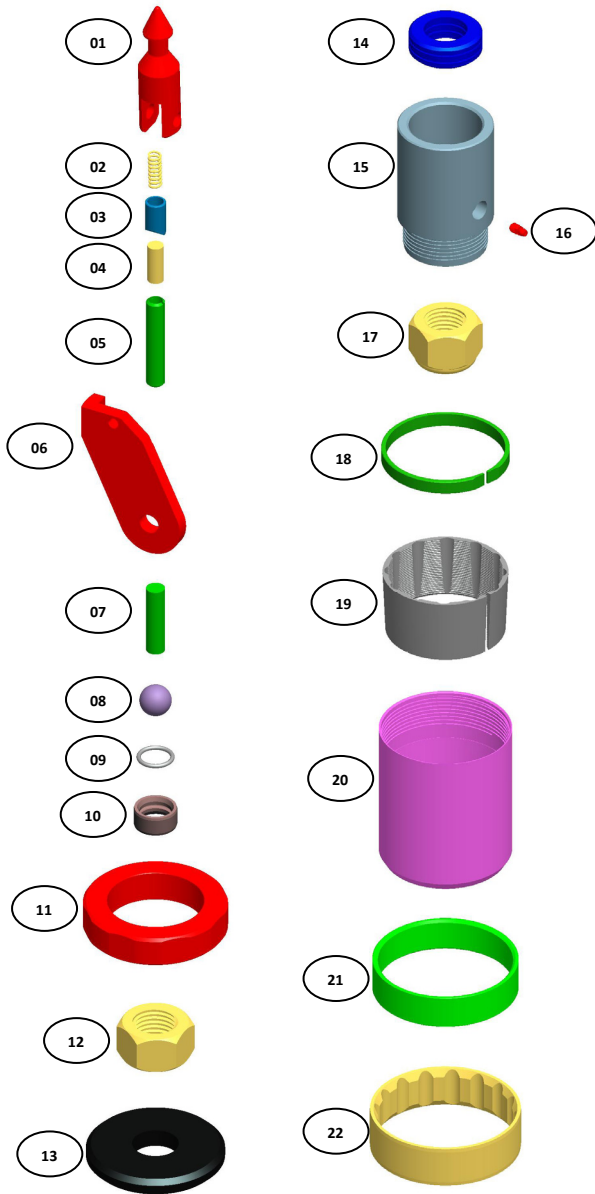


PWL-LI CORE BARREL SPARE PARTS KIT



	ITEM DESCRIPTION	PART NUMBERS
1-22	PWL-LI CORE BARREL SPARE PARTS KIT	20-00-140
1	SPEARHEAD POINT	16-03-001
2	COMPRESSION SPRING	16-03-002
3	DETENT PLUNGER	16-03-003
4	SOLID DOWELL 7/16" x 1"	16-03-005
5	SPRING DOWELL 1/2" x 2 3/4" - 2 NOS.	18-03-003
6	PWL-LI LATCH - 2 NOS.	20-03-002
7	SOLID DOWELL 1/2" x 2 1/8"	18-03-006
8	STAINLESS STEEL BALL 22 mm	16-03-014
9	LANDING INDICATOR BUSH O RING	16-03-016
10	LANDING INDICATOR BUSH	16-03-015
11	LANDING SHOULDER	20-03-003
12	ADJUSTING HEX NUT	20-03-004
13	SHUT OFF VALVE - 2 NOS.	20-03-007
14	THRUST BEARINGS - 3 NOS.	20-03-009
15	BEARING SPINDLE	20-03-010
16	GREASE FITTING	16-03-024
17	NYLOCK NUT, 1 1/4" UNC	20-03-013
18	RING STOP	20-03-021
19	CORE LIFTER	20-03-022
20	CORE LIFTER CASE	20-03-023
21	RING LANDING	20-02-003
22	STABILIZER RING	20-02-006